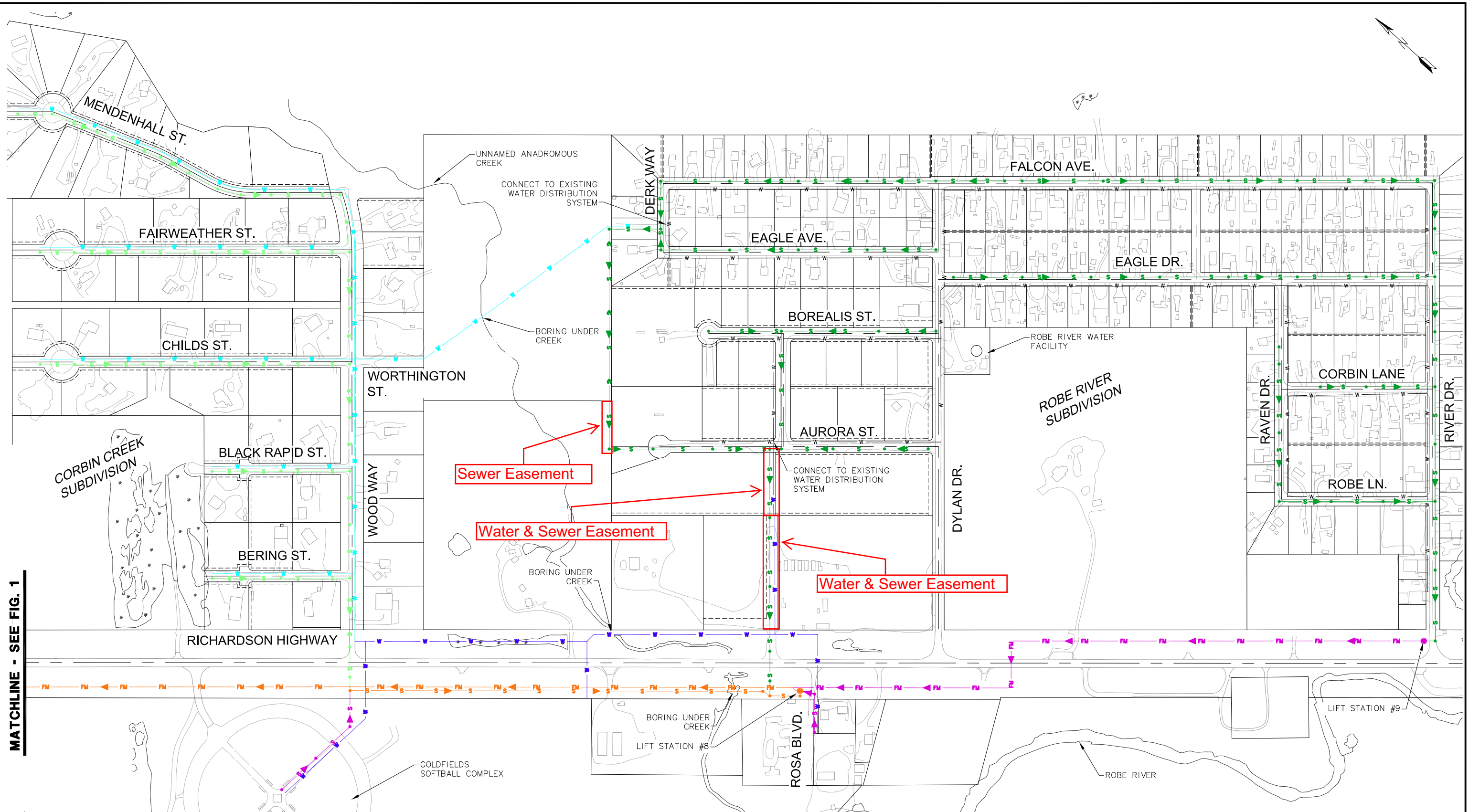


File: J:\Jobsdata\20301.00\_Valdez\_Corbin\_Creek & Robe River Water & Sewer\00\_CADD\02\_Figures\01\_DSR\20301.00\_Schedule\_Map\_R1.dwg

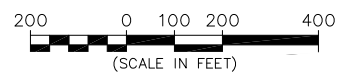


**MATCHLINE - SEE FIG. 1**

- SCHEDULE A:  
SEWER LIFT STATION #8 AND FORCE MAIN TO VALDEZ WASTE WATER TREATMENT FACILITY
- SCHEDULE B:  
SEWER COLLECTION SYSTEM INTO CORBIN CREEK SUBDIVISION
- SCHEDULE C:  
WATER DISTRIBUTION SYSTEM INTO CORBIN CREEK SUBDIVISION

- SCHEDULE D:  
WATER DISTRIBUTION SYSTEM TO AREAS SOUTH OF RICHARDSON HIGHWAY
- SCHEDULE E:  
SEWER LIFT STATIONS #9 AND #10 AND SEWER COLLECTION SYSTEM TO AREAS SOUTH OF THE RICHARDSON HIGHWAY
- SCHEDULE F:  
SEWER COLLECTION SYSTEM INTO ROBE RIVER SUBDIVISION

EXISTING WATER MAIN



PROJECT: 20301.00  
STATUS: Design Memo

CITY OF VALDEZ, ALASKA		DATE OCT 2010
CORBIN CREEK AND ROBE RIVER WATER AND SEWER SCHEDULES		SCALE GRAPHIC
		FIGURE 2